

Monday 23rd September 2024



Pink Class had their first Forest school session last Friday, they sang songs, had hot chocolate and played games.

The Families and Friends of Tonacliffe are holding an AGM on Monday 7th October at 6pm.



The FFOT are looking for nominations for the positions of Chairperson, Secretary and Treasurer. If you would like to volunteer, please let the school office know as soon as possible.

Many thanks!

Tonacliffe Primary school has an Asda cash pot! If you would like to support our school and you have the Asda app, please nominate Tonacliffe Primary School to receive extra funds on the Asda app each time you shop. Thank you!

## A Guide to Parking Safely at Our Schools

Inconsiderate and dangerous parking around our schools has become a big problem, putting the safety of children and others at risk. We all want to keep our children safe around schools, so here's some top tips on how you can make a difference.

### Did you know?

One in five cars in the morning rush hour is taking children to school

### How Can You Help?

- ✓ Keep your speed down
- ✓ Turn your engine off if leaving your vehicle
- ✓ Leave the middle of the road free, with enough room for other road users to easily pass through
- ✓ Make sure your child leaves and enters your vehicle safely onto the pavement
- ✓ Check for pedestrians and cyclists before opening a car door
- ✓ Leave enough room on pavements for pedestrians to get past
- ✓ Take care when reversing

### Please Keep Clear...

- ✓ Zig Zags and School Entrances
- ✓ Dropped Kerbs
- ✓ Resident's Driveways
- ✓ Opposite or within 10 meters of a junction- so that children can see cars and cars can see children

### Don't Forget...

Congestion around schools is one of the main reasons given for dangerous parking and there are other ways you could do the school run...

### Your questions answered...

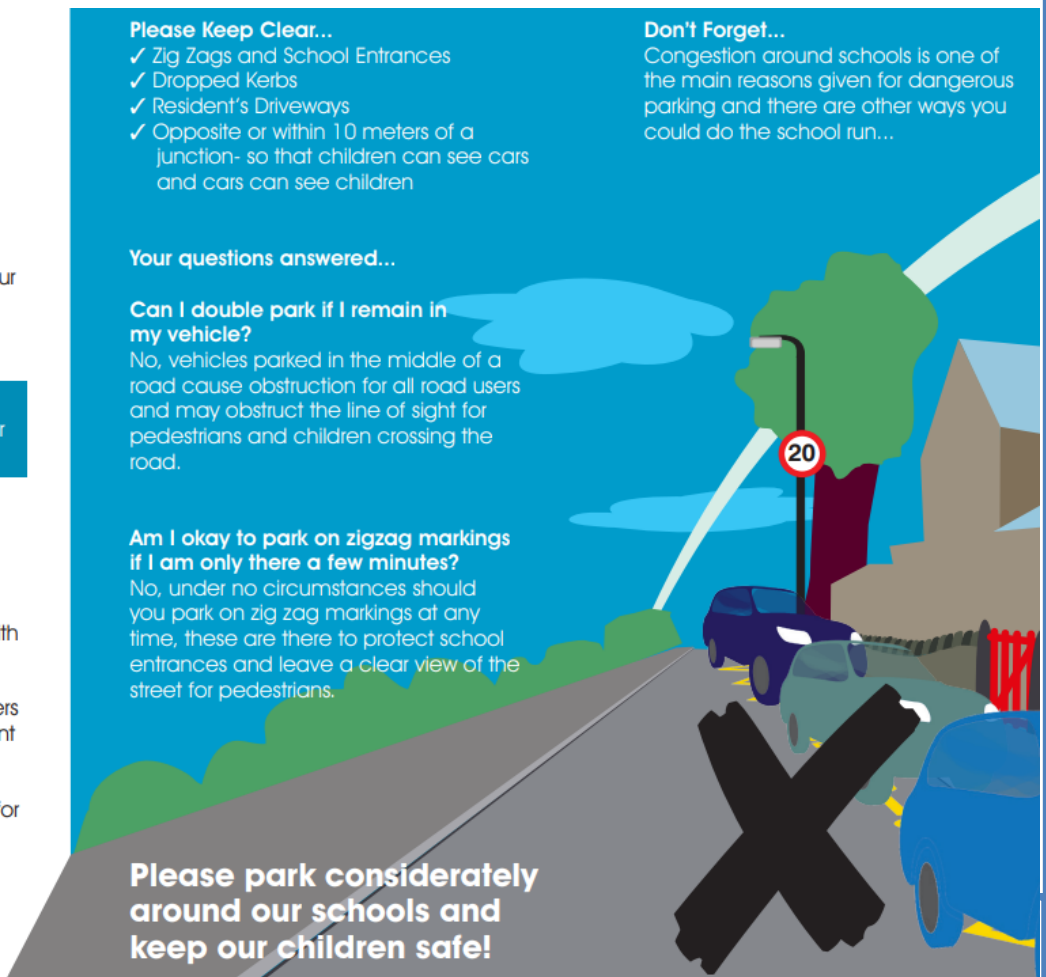
#### Can I double park if I remain in my vehicle?

No, vehicles parked in the middle of a road cause obstruction for all road users and may obstruct the line of sight for pedestrians and children crossing the road.

#### Am I okay to park on zigzag markings if I am only there a few minutes?

No, under no circumstances should you park on zig zag markings at any time, these are there to protect school entrances and leave a clear view of the street for pedestrians.

**Please park considerately around our schools and keep our children safe!**



# STAR PUPILS

- Nursery: Toby B.
- Green Class: Freddie W.
- Pink Class: Imaan U.
- White Class: Alba M.
- Red Class: Kiera J.
- Yellow Class: Bryony P.
- Orange Class : Thomas W-D.
- Lime Class: Ella C.
- Turquoise Class: Naima A-W.
- Gold Class: Edie H.
- Purple Class: Scarlett D.

# HOUSE POINTS

Ash: 284

Hazel: 317

Oak: 309

**Willow: 331**

Well done

to the Willow Team who are this week's winners!

# ATTENDANCE

We aim for at least 97% attendance each week; here are the attendance figures for last week:

	Yellow Class:	99.3%	
Green Class:	100%	Orange Class:	100%
Pink Class:	99.2%	Lime Class:	96.7%
White Class:	99.2%	Turquoise Class:	95.3%
Red Class:	97.7%	Gold Class:	98.3%
	Purple Class:	97.1%	

**Our overall school attendance figure for week ending**

**Friday 6th September 2024 is 97.6%**

# FRIENDSHIP AND KINDNESS AWARD

**Jace H.**

For always being a polite and helpful member of our school—  
Jace is always happy to help anybody, anytime!







Please remember to visit our website for long term dates. Thank you.

**Monday 23rd September:** Years 3/4 Multiplication workshops– 2:45pm & 5pm.

**Tuesday 24th September:** Gold Class parents' assembly.

**Wednesday 25th September:** European Languages Day.

**Monday 30th September & Tuesday 1st October:** Year 6 Bikeability group 1.

**Tuesday 1st October:** Black History Month begins.

**Wednesday 2nd October & Thursday 3rd October:** Year 6 Bikeability group 2.

**Thursday 3rd October:** National Poetry Day.

**Monday 7th October:** Reception & KS1 Handwriting Workshops– 2:30pm & 5pm.

**Tuesday 8th October:** 'Bring a tin.' Harvest Assembly.

**Monday 14th October:** Year 1 Phonics Screening Check Workshop– 2:30pm & 5pm.

**Tuesday 15th October:** Red Class Parents' assembly– 9am.

**Tuesday 15th October:** School photographer in-individual photographs.

**Thursday 17th October:** Non-uniform day.

**Thursday 17th October:** School discos– Reception-Year 3 disco– 3:45-5pm.

Years 4-6 disco– 5:15-6pm.

# School Holiday/Term Dates 2024-25



September 2024							October 2024							November 2024							December 2024						
S	M	T	W	T	F	S	S	M	T	W	T	F	S	S	M	T	W	T	F	S	S	M	T	W	T	F	S
1	2	3	4	5	6	7	1	2	3	4	5							1	2	1	2	3	4	5	6	7	
8	9	10	11	12	13	14	6	7	8	9	10	11	12	3	4	5	6	7	8	9	8	9	10	11	12	13	14
15	16	17	18	19	20	21	13	14	15	16	17	18	19	10	11	12	13	14	15	16	15	16	17	18	19	20	21
22	23	24	25	26	27	28	20	21	22	23	24	25	26	17	18	19	20	21	22	23	22	23	24	25	26	27	28
29	30						27	28	29	30	31			24	25	26	27	28	29	30	29	30	31				

January 2025							February 2025							March 2025							April 2025						
S	M	T	W	T	F	S	S	M	T	W	T	F	S	S	M	T	W	T	F	S	S	M	T	W	T	F	S
			1	2	3	4						1						1			1	2	3	4	5		
5	6	7	8	9	10	11	2	3	4	5	6	7	8	2	3	4	5	6	7	8	6	7	8	9	10	11	12
12	13	14	15	16	17	18	9	10	11	12	13	14	15	9	10	11	12	13	14	15	13	14	15	16	17	18	19
19	20	21	22	23	24	25	16	17	18	19	20	21	22	16	17	18	19	20	21	22	20	21	22	23	24	25	26
26	27	28	29	30	31		23	24	25	26	27	28		23	24	25	26	27	28	29	27	28	29	30			
														30	31												

May 2025							June 2025							July 2025							August 2025						
S	M	T	W	T	F	S	S	M	T	W	T	F	S	S	M	T	W	T	F	S	S	M	T	W	T	F	S
				1	2	3	1	2	3	4	5	6	7			1	2	3	4	5						1	2
4	5	6	7	8	9	10	8	9	10	11	12	13	14	6	7	8	9	10	11	12	3	4	5	6	7	8	9
11	12	13	14	15	16	17	15	16	17	18	19	20	21	13	14	15	16	17	18	19	10	11	12	13	14	15	16
18	19	20	21	22	23	24	22	23	24	25	26	27	28	20	21	22	23	24	25	26	17	18	19	20	21	22	23
25	26	27	28	29	30	31	29	30						27	28	29	30	31			24	25	26	27	28	29	30
																					31						

	<b>Training days (children do not attend school)</b>
	<b>Holidays</b>